

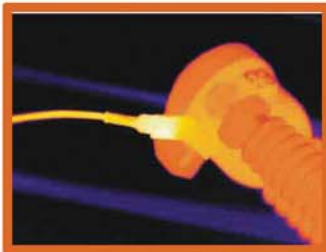


Infrared 928+

Highly Refined IR Thermography Camera

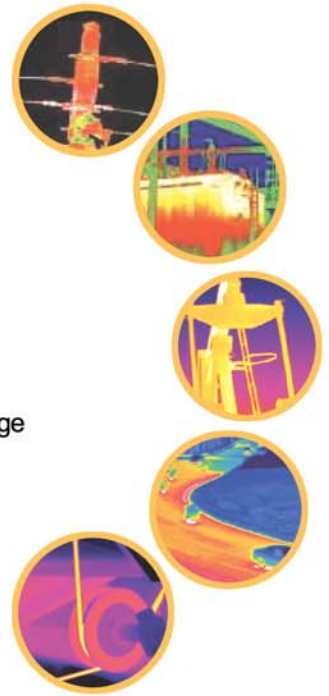
Visual and thermal imaging Precision non-contact temperature measurement

Refined from powerful portable IR thermal camera GUIDIR IR928+, integrating high resolution visual camera, GUIDIR IR928+ offers more robust performance and more reliable functionality at an affordable price as usual. Working with professional GUIDIR post-analysis software, GUIDIR IR928+ greatly enhances efficiency and productivity of inspection programs. This is what professional thermographers really want.



Features & Benefits

- ✓ Rugged, durable and easy to use
- ✓ Efficient thermal and visual imaging
- ✓ Precise reliable temperature measurement
- ✓ Fully onboard image processing
- ✓ Large capacity radiometric image storage
- ✓ Professional inspection and reporting image storage
- ✓ Professional inspection and reporting software
- ✓ License free and rapid delivery



Standard Configuration

- ⊙ Cameras (infrared and visual)
- ⊙ 40 mm IR lens
- ⊙ 4" LCD display
- ⊙ 0.25" LCD viewfinder
- ⊙ 256 MB CF card and card reader
- ⊙ Two rechargeable Li-ion batteries
- ⊙ Battery charger
- ⊙ AC adapter
- ⊙ Video cable
- ⊙ Communication protocol
- ⊙ Post-analysis software
- ⊙ User manual
- ⊙ Carrying case



Imaging Performance

THERMAL

Detector Type:	Uncooled FPA Microbolometer (320 x 240 pixels, 45 μm)
Spectral Range:	8 – 14 μm
Field of view:	21" x 15"
Image Frequency:	50 Hz PAL/ 60 Hz NTSC, non interfaced
Thermal Sensitivity:	0.08 $^{\circ}\text{C}$ at 30 $^{\circ}\text{C}$
Electronic Zoom:	x2, x4, x8 interpolating

VISUAL

Built - in Digital Video:	CMOS Sensors, 640 x 480 pixels, 224 Colors
---------------------------	--

Image Presentation

External Display:	4" high resolution color LCD (TFT)
Viewfinder:	0.25" built-in high resolution color LCD (TFT)
Video Output:	PAL/NTSC, composite video

Measurement

Template Range:	-20 $^{\circ}\text{C}$ – +500 $^{\circ}\text{C}$ (up to +1500 $^{\circ}\text{C}$ optional)
Accuracy:	± 2 $^{\circ}\text{C}$ or ± 2 % of reading
Measurement Modes:	Spot / manual (up to 4 moveable), spot / automatic placement at max, area (up to 4 moveable) displaying either max, min, or average, isotherm, line profile, auto alarm
Emissivity Correction:	Variable from 0.01 to 1.00 (in 0.01 increment)
Measurement Features:	Automatic correction based on user input for emissivity, reflected ambient temperature, distance, relative humidity, atmospheric transmission and external optics

Image Storage

Type:	Removable 256 MB Compact Flash Memory Card
File Format:	IMG (an individual file consists of infrared image, visual image and voice annotation if any)
Voice Annotation:	30 seconds per file (more than 30 second optional)

Laser Locator

Classification Type:	Class 2 semiconductor laser
----------------------	-----------------------------

Power System

Battery Type:	Rechargeable Li-on Camcorder battery, filed-replaceable
Battery Opening Time:	Over 3 hours continuous operation
external Power Operation:	AC adapter 110/220 VAC, 50/60 Hz

Environmental

Operating Temperature:	- 20 $^{\circ}\text{C}$ – +60 $^{\circ}\text{C}$
Storage Temperature:	- 20 $^{\circ}\text{C}$ – +60 $^{\circ}\text{C}$
Humidity:	Operating and storing 10 % to 95 %, non-condensing
Encapsulation:	IP54 IEC 529 housing
Shock:	Operational: 25G, IEC 68-2-29
Vibration:	Operational: 25G, IEC 68-2-6

Interfaces

Remote Control:	RS232 serial communication
Live Video Transmission: (Optional)	Up to 750 m to a remote monitor

Physical Characteristics

Weight:	1.6 Kg (including battery)
Size:	148 mm x 104 mm x 108 mm (standard model)
Tripod Mounting:	1/4" - 20"

